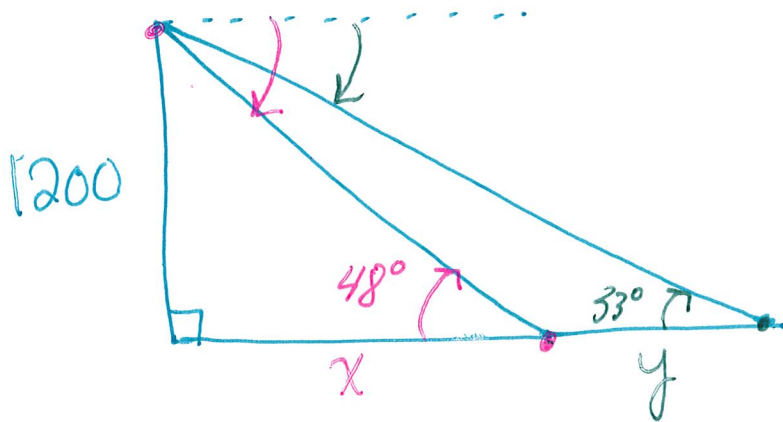


Example 1.



$$\tan 48^\circ = \frac{1200}{x}$$

$$\tan 33^\circ = \frac{1200}{x+y}$$

$$x = \frac{1200}{\tan 48^\circ}$$

$$x+y = \frac{1200}{\tan 33^\circ}$$

$$x = 1080.4848$$

$$x+y = 1847.8379$$

$$y = 767.353 \text{ feet}$$